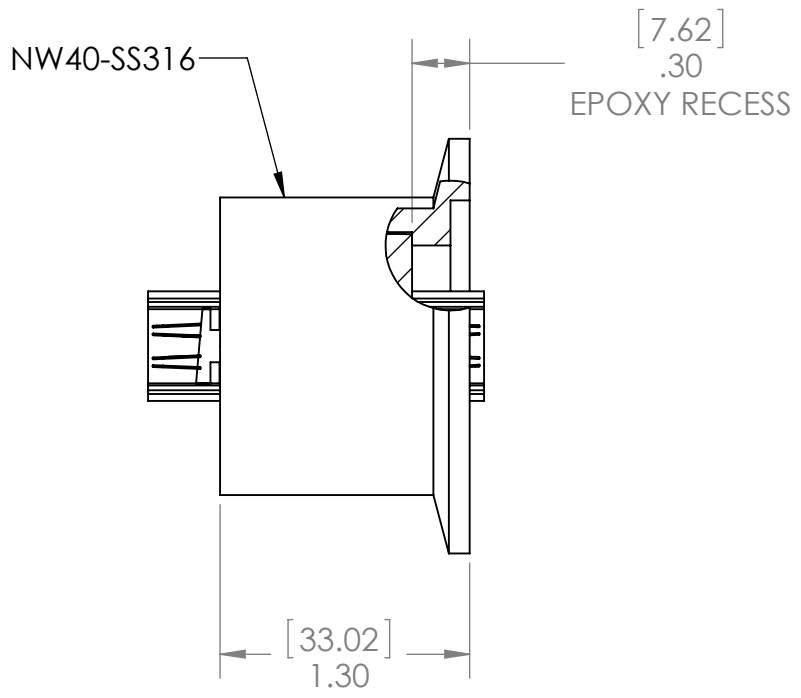
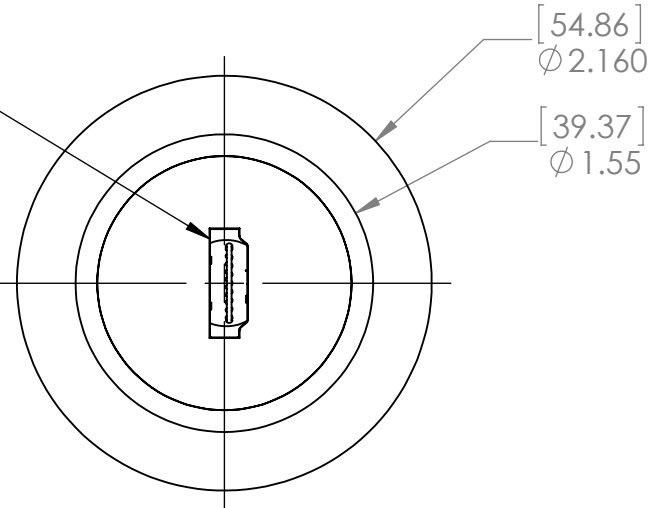



8 7 6 5 4 3 2 1

REVISIONS				
ZONE	REV.	DESCRIPTION	DATE	APPROVED
	A	INITIAL RELEASE	19NOV2018	BS

2x HDMI TYPE A



- NOTES:
1. HELIUM LEAK TEST @ 1 ATM 1×10^{-8} STD-CC/SEC OR BETTER, VACUUM ON THE FLANGE SIDE.
 2. HYPOT 100VDC 100 MEGOHMS .01 SECOND MINIMUM CONDUCTOR TO CONDUCTOR AND HOUSING.
 3. SEAL OPERATING TEMPERATURE -20C TO 130C (CONNECTOR LIMITED TO 85C).
 4. DIMENSIONS ARE INCHES [MILLIMETERS], MILLIMETERS SHOWN FOR REFERENCE ONLY.
 5. CUSTOM SIZES, WIRE OR FIBER OPTIC CONFIGURATIONS, & TESTS AVAILABLE, PLEASE CONTACT RHS FOR MORE INFORMATION.

UNLESS OTHERWISE SPECIFIED:		NAME	DATE	 RELIABLE HERMETIC SEALS Jersey City, NJ, USA 888-747-3250	
DIMENSIONS ARE IN INCHES	DRAWN	MM	19NOV2018		
TOLERANCES:	CHECKED	BS	19NOV2018		
FRACTIONAL $\pm 1/16$	ENG APPR.	MM	19NOV2018		
ANGULAR $\pm .5$	MFG APPR.				
X. ± 1 .X $\pm .1$	Q.A.			TITLE: CONNECTOR SEAL NW40 SS HDMI FEMALE A-HDMI FEMALE A	
.XX $\pm .02$.XXX $\pm .005$	PROPRIETARY AND CONFIDENTIAL THE INFORMATION CONTAINED IN THIS DRAWING IS THE SOLE PROPERTY OF RELIABLE HERMETIC SEALS. ANY REPRODUCTION IN PART OR AS A WHOLE WITHOUT THE WRITTEN PERMISSION OF RELIABLE HERMETIC SEALS IS PROHIBITED.		SIZE	DWG. NO.	REV
INTERPRET GEOMETRIC TOLERANCING PER:			B	80183	A
MATERIAL	NOTED		SCALE: 1:1	WEIGHT:	SHEET 1 OF 1
FINISH					
DO NOT SCALE DRAWING					

8 7 6 5 4 3 2 1